

## MRI Scan

An MRI (Magnetic Resonance Imaging) machine creates an image of the body using a large magnet. You will lie on a table that slides into the MRI machine. You will not feel the magnetic field, but you will hear some noise. It is important to remain very still during the scan. The procedure typically takes from 45-60 minutes and you will be able to speak to the MRI technologist the entire time. In the machine, do not wear:

- Jewelry
- Metal objects
- Eyeglasses
- Dental pieces

Before the procedure, let the technologist know if you have a pacemaker, have had heart valves replaced, or have any metal in your body, including surgical staples, metal fillings or permanent makeup. Also let staff know if you become claustrophobic (there is little clearance inside the MRI machine), have had a bullet wound or worked with metal (metal shavings risk).

## CT or CAT Scan

A Computed Tomography scan (CT or CAT) uses low energy x-rays and computers to create a cross-sectional image of your body. It provides much more information than a basic x-ray. A CT scan is performed while you lie on a long table that slides into a large circular opening in the imaging machine. The scanner will rotate around you, emitting x-rays and a buzzing noise. It is important to remain very still during the procedure. Sometimes an injection of contrast agent is given to help make the image clearer to the doctor. You will be able to speak to the technologist while you are in the machine. The scan may take 15-30 minutes. Alert your doctor if you are pregnant or allergic to iodine.

## Contributing to the Community's Health

Frequently people inquire as to how they may make a contribution to the community's health. We encourage you to consider Glendale Adventist Medical Center's Healthcare Foundation whenever you or your family desire to make a difference in the health of our community. For more information, please call (818) 409-8055.

Physician Referral (818)409-8100

HEALTH CONNECTIONS

## Understanding Diagnostic Imaging

at Glendale Adventist Medical Center



There are different methods for diagnostic imaging. Your doctor will discuss with you which method is appropriate for your individual case.

[www.glendaleadventist.com](http://www.glendaleadventist.com)

Glendale Adventist Medical Center



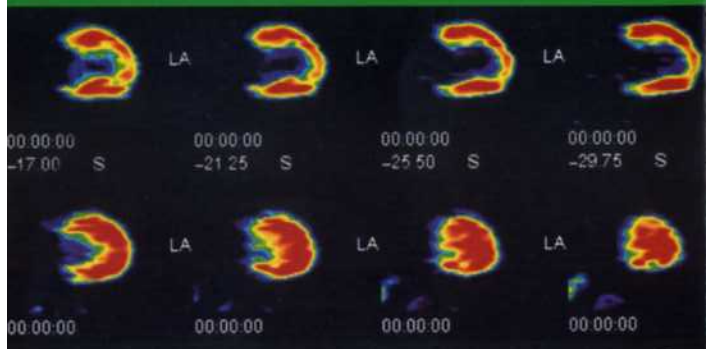
# Understanding Diagnostic Imaging

This brochure discusses some of the most common diagnostic equipment used to determine the location and specific type of disease you may have. Each test provides different information about your body to your doctor, so you may be asked to have more than one of these tests.

## PET Scan

**A Positron Emission Tomography (PET) scan** is generally used in combination with an MRI or CT scan. It uses a tracer material that sends a signal out in areas of your body that may be abnormal.

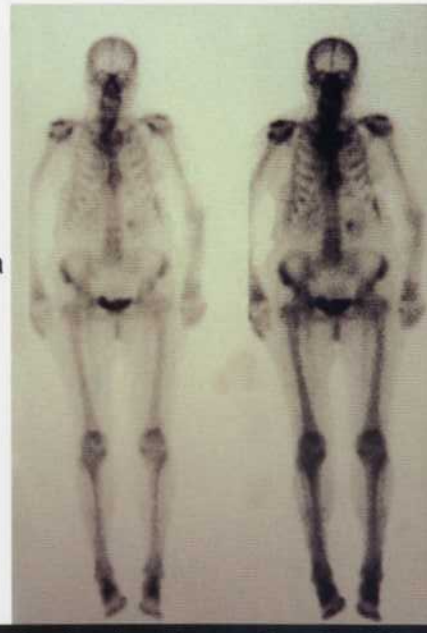
You will be asked to fast for two to twelve hours prior to the scan so that your body takes up the tracer effectively. Your glucose level will be measured prior to the scan. To take the scan, you will be injected or inhale a small amount of radioactive (radiolabeled) tracer material. You should feel no discomfort from the tracer or the scan. You may also be given some medicine to help you stay quiet during the scan as well as some medication



to reduce your bladder activity. You will then lie on a table that slides into the PET scanner. You may be lightly strapped in to help you hold still. It is important to remain very still during the scan. You will not feel the scan, but you will hear some noise as the scanner moves. The radioactivity of the tracer goes away quickly and you can be with your loved ones after the scan.

## Bone Scan

**A Bone Scan (Nuclear Medicine)** is used to see if disease has entered your bones. It is similar to an x-ray in that it uses radiation to look at the condition of your bones. However, in this case you take radioactive material (radionuclide) internally, usually via injection. The radionuclide travels in your blood and settles in areas where there is bone building or breaking down. This activity could be from cancer or perhaps arthritis or a recent bone fracture. The radionuclide sends out a weak radiation signal that is read by a machine called a gamma camera.



You should feel no discomfort from the radionuclide or the scan. The radioactivity of this material lasts for a very short period in the body, and actually gives you no more total radiation than a typical external x-ray like a chest x-ray. This test is an important way to get information about whether disease has developed in the bones in your body much earlier than a normal x-ray would show a problem. The scan itself is done two to three hours after you take the radionuclide and takes about 60 minutes. After your injection, you will be asked to drink fluids and empty your bladder during the waiting period to flush the material from your urine and make the image of your bones clearer.

## Ultrasound

An ultrasound machine uses high-frequency sound waves and a computer to create pictures of your body. You will have a special gel put on the skin where you are being scanned that helps conduct the sound. Then the technologist will move a wand that sends the sound waves around this same area. Ultrasound may be used externally or internally in the rectal or vaginal areas, depending on area being scanned. You will not feel or hear the high-frequency sounds the ultrasound machine makes. The images appear on a TV screen and are recorded. You may be asked to drink lots of water and wait to urinate until after the exam to improve the image.

